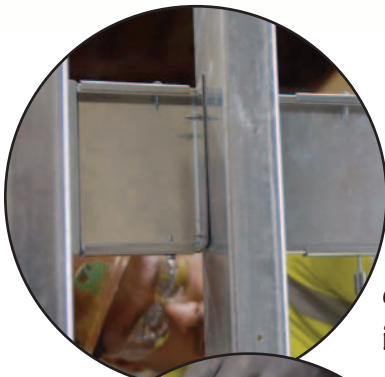
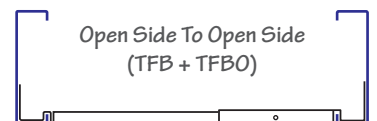
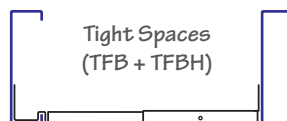
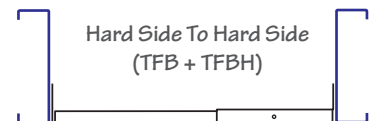
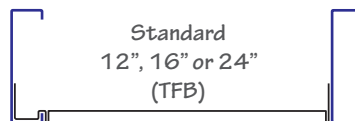




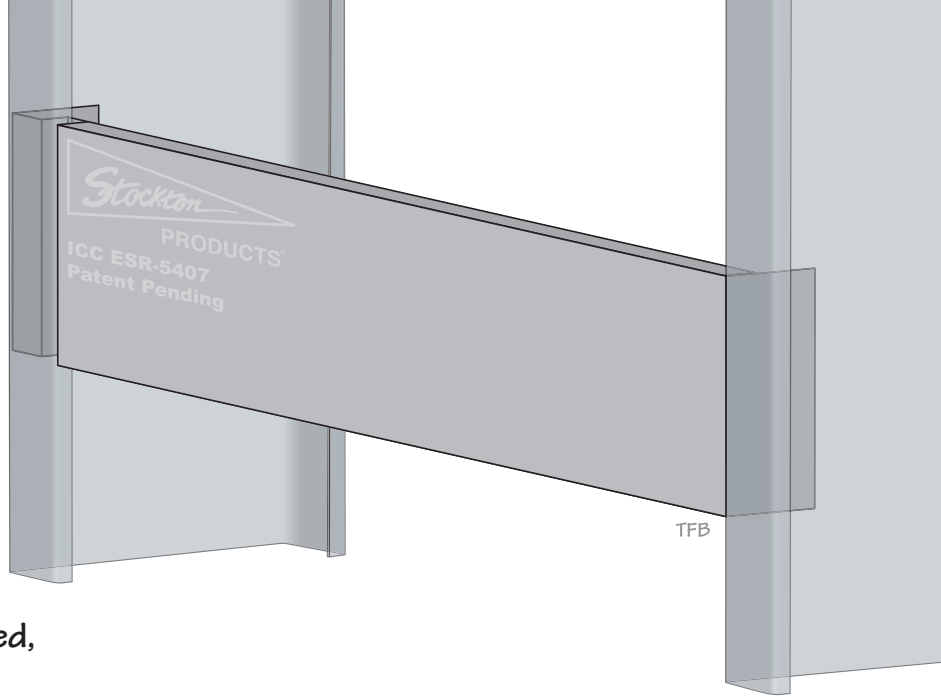
TRUFLUSH™



Stockton Products® announces the release of its patent pending TruFlush™ drywall backing, an innovative product designed to support wall mounted rails, grab bars, and wall mounted equipment and devices. As an alternative to notch track and flat strap, TruFlush™ backing installs 50% faster with fasteners on the inside of the metal studs and more importantly, acts as an insurance policy to install drywall correctly the first time avoiding back charges for popped fasteners and refloating finished drywall. TruFlush™ backing is custom designed and fabricated to match all major stud manufacturers for a perfect fit every time.



877-786-2587 • StocktonProducts.com

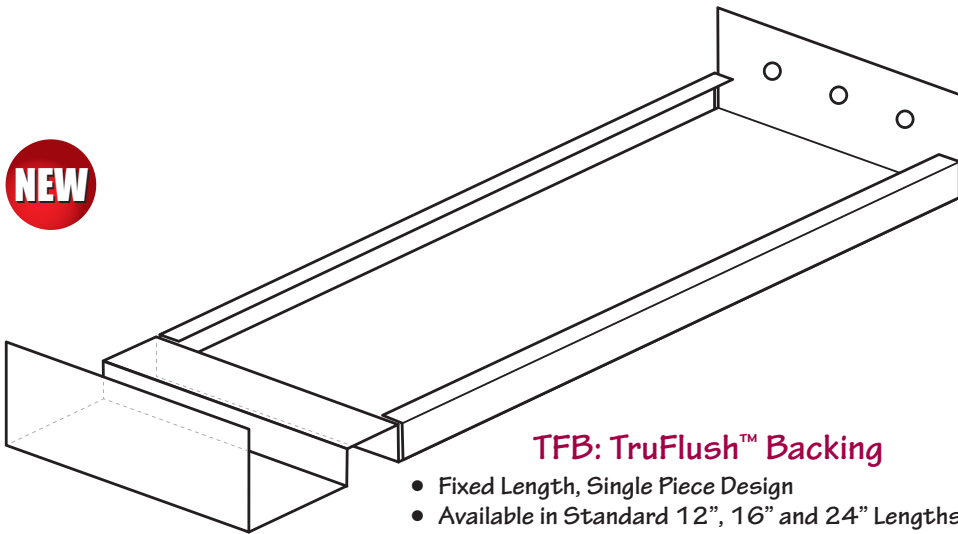


TRUFLUSH™

- 50% Faster Installation
- Eliminates Costly Backcharges
- One Person Installation
- Increased Safety, No Grinders Needed, Only Chop Saw And Screw Gun
- Available 20 gauge or 16 gauge Galvanized Steel
- ICC ESR-5407
- Patent Pending

Low profile, return lip backing that provides increased load capacity. TruFlush™ Backing will eliminate build up, drywall cracking, fastener popping and bulging walls.

NEW



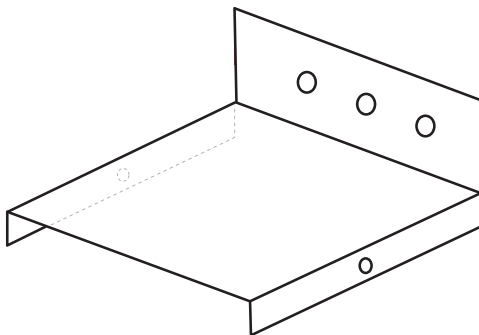
TFB: TruFlush™ Backing

- Fixed Length, Single Piece Design
- Available in Standard 12", 16" and 24" Lengths



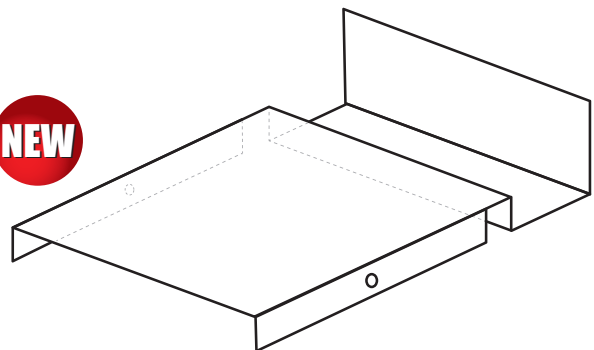
For more information
scan the about
QR code.

NEW



TFBH: TruFlush™ Backing Makeup Hard Side

NEW



TFBO: TruFlush™ Backing Makeup Open Side

For More Information, Including Data Sheets, Load Testing Data, Installation Video And More Visit

www.StocktonProducts.com/truflush